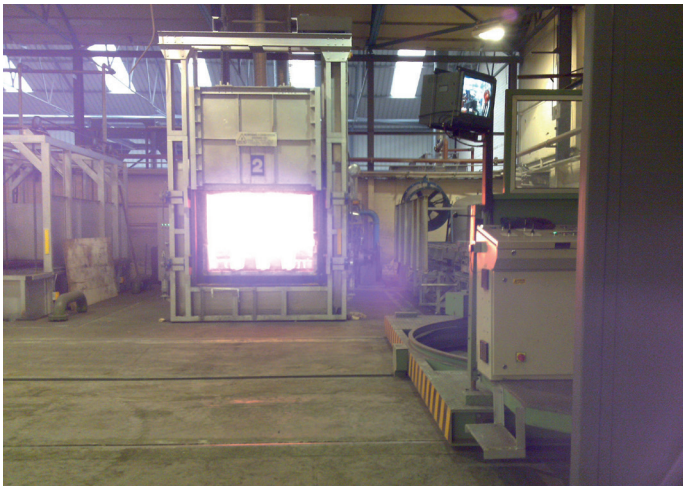


# Heat Treatment Lines



Abbey



## Heat Treatment Lines

Complete Heat Treatment Line for hardening and tempering of steel bars. Supplied to Abbey Group, Sheffield, England.

Comprising of: Two Heat Treatment Furnaces, Water Quench, Adiabatic Cooler, Charging Machine and Loading Tables.

### Furnace Specification:

Capacity:	4 tonnes of stainless steel bars
Temperature Range:	550°C to 1200°C
Temperature Uniformity:	±5°C up to 750°C ±10°C from 750°C to 1200°C
Control System:	Pulse fired high velocity hot air burners with flue gas recuperation

### Water Quench Specification:

30,000 litre capacity
Hydraulic lift
Multi-jet pumped agitation and recirculation

### Charging Machine:

4 tonne capacity complete with 3 split forks
12 metre lateral travel
4 metre hydraulically operated fork travel



